



Shown with optional ADA cart



Shown with optional top air discharge chute



Simplified pump

Item No. _____

C722 ADA

Soft Serve Freezer

Twin Twist, Pump

Features

Offers all the popular soft serve variations, from low or non-fat ice creams to custards, yogurt, and sorbet. Serve two separate soft serve flavors or an equal combination of both in a twist.

Freezing Cylinder

Two, 2.8 quart (2.7 liter).

Mix Hopper

Two, 14 quart (13.2 liter). Separate hopper refrigeration (SHR) maintains mix below 41°F (5°C) during Auto and Standby modes.

Indicator Lights

Digital readout displays hours since last brush-cleaning to ensure product safety. Mix Low light alerts operator to add mix. Audible alarm may be enabled to sound when mix is low. When the Mix Out light flashes, the unit shuts down automatically to prevent damage.

Touch Screen Controls

Microprocessor touch controls are embedded in a durable tempered glass panel. Multiple languages are selectable. Viscosity is continually measured to dispense consistent quality soft serve desserts. Temperatures in the hoppers or freezing cylinders may be displayed at any point of operation, in either Fahrenheit or Celsius. Draw counter allows operator to view number of servings dispensed.

Standby

During long no-use periods, the Standby feature maintains safe product temperatures in the mix hopper and freezing cylinder.

Door Interlock System

Protects the operator from injury as the beater will not operate without the dispensing door in place.

Freezer Door

A specially designed thermoplastic door allows quick ejection of product with a simple movement of the draw handle. Self-closing draw handles are standard.

Meets Americans with Disabilities Act (ADA) dispensing height for self-service application

C722 ADA

750 N. Blackhawk Blvd. Rockton, Illinois 61072
800-255-0626
Phone 815-624-8333 Fax 815-624-8000
www.taylor-company.com
info@taylor-company.com

ISO 9001:2015
Registered Firm



Standard 6

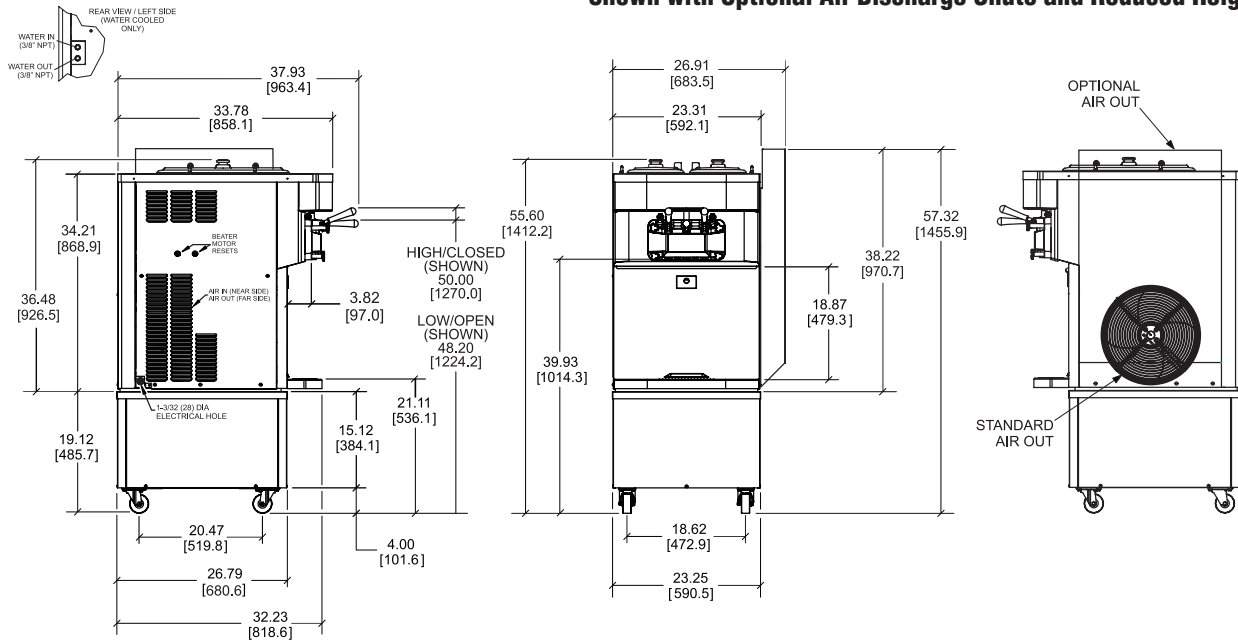


LISTED
SA2650



Selected 50
Hz. Models

Shown with Optional Air Discharge Chute and Reduced Height Cart



FIGURES IN BRACKETS INDICATE MILLIMETERS. DECIMAL DIMENSIONS EQUAL TO PLUS OR MINUS 1/16 inch [1.5mm].

Weights	lbs.	kgs.
Net	549	249.0
Crated	608	275.8

*For reference only

	cu. ft.	cu. m.
Volume	39.2	1.11

Dimensions	in.	mm.
Width	23-5/16	592
Depth	33-13/16	858
Height	36-1/2	927
Counter Clearance	---	---

*Designed to rest on a plastic pad directly on the countertop or optional cart

Electrical	Maximum Fuse Size	Minimum Circuit Ampacity	Poles (P) Wires (W)
208-230/60/1 Air	30	25	2P 3W
208-230/60/1 Water	30	25	2P 3W
208-230/60/3 Air	15	15	3P 4W
208-230/60/3 Water	15	15	3P 4W
220-240/50/1 Air	25	21	2P 3W
380-415/50/3N~ Air	9	8	4P 5W

This unit may be manufactured with other electrical characteristics and may have additional regulatory agency approvals. Consult the local Taylor distributor for other electrical characteristics and agency approvals based on specific electrical and country requirements.

(For exact electrical information, approval marks, and refrigerant, always refer to the data label of the unit.)

Continuing research results in steady improvements; therefore, these specifications are subject to change without notice.

Bidding Specs

Electrical: Volt _____ Hz _____ ph _____
 Neutral: Yes No Cooling: Air Water NA

Options: _____

All options may not be available in combination with others or with all electrical or cooling configurations. Please consult your local Taylor distributor.

Authorized Taylor Distributor

Specifications

Electrical

Two dedicated electrical connections are required. See the Electrical chart for the proper electrical requirements. Manufactured to be permanently connected. Consult your local Taylor distributor for cord and receptacle specifications as local codes allow.

Beater Motor

Two, 1.0 hp.

Refrigeration System

One, 8,300 BTU/hr. R449A.
 Separate Hopper Refrigeration (SHR), one, 400 BTU/hr. R134a. (BTUs may vary depending on compressor used.)

Air-Cooled

Minimum 6" (152 mm) on both sides. It is recommended to place the rear of the unit against a wall or allow 6" clearance (152 mm) at the rear. Optional air discharge chute directs heated air exhaust upward. Minimum clearance above top air discharge chute is 12" (305 mm). No clearance required on right side if air discharge chute is used

Water-Cooled

Water inlet and drain connections out rear panel 3/8" FPT.

Accessories

- Drain Adaptor (for ease of rinsing and cleaning)
- Draw Handles (to comply with ADA force requirement)
- Draw Valve Lock Kit
- Hopper Locks
- Legs - Increase height of unit by 4-1/4" (108 mm)
- Decals - Twist or Flavor Burst Cone

Options

- Hopper Agitators
- Top Air Discharge
- C206 Cart with Casters (standard height)
- C206 Cart with Casters (ADA height)



750 N. Blackhawk Blvd.
 Rockton, Illinois 61072
www.taylor-company.com