



Item No. _____

342

Frozen Uncarbonated Beverage Freezer

Two Flavor

Features

Vary your menu by offering smoothies, frozen cocktails, fruit juices, coffees, cappuccino, and tea slush beverages, all served at the desired thickness.

Freezing Cylinder

Two, 7 quart (6.6 liter).

Mix Hopper

Two, 20 quart (18.9 liter). Optional refrigerated hopper approved for dairy products.

Indicator Light

Add Mix light alerts the operator to add mix.

Automatic Consistency Control

A specially designed viscosity control automatically maintains superior product quality. Adjustable control allows the operator to serve a wide variety of frozen beverages at the desired thickness.

Two Locking Casters

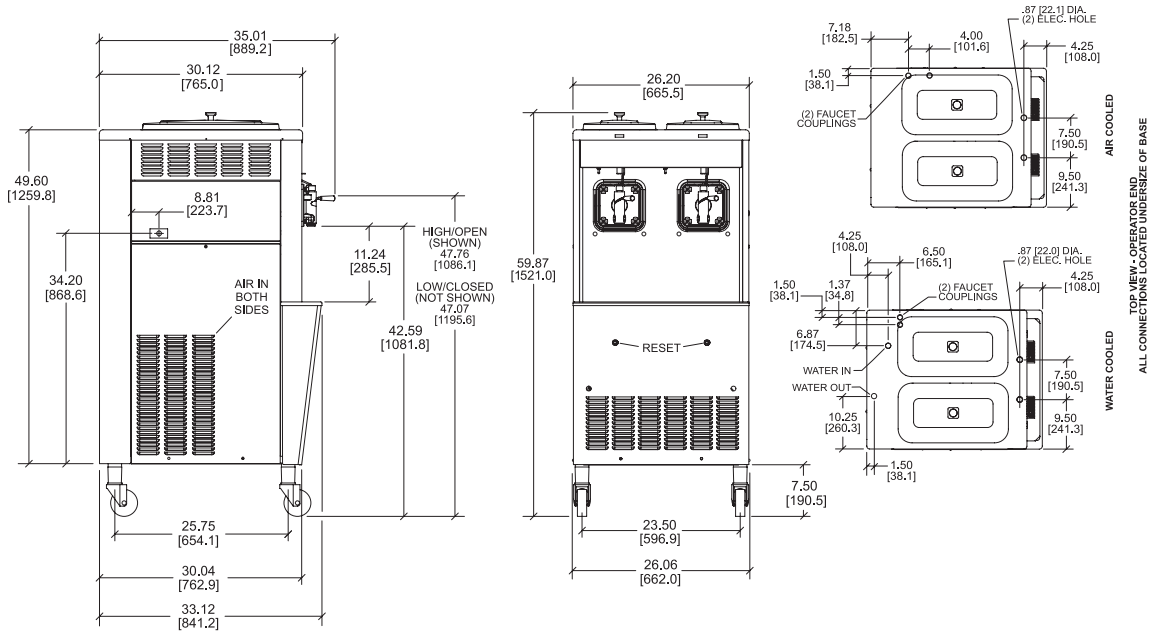
Front casters have a locking feature for operators to keep equipment in place. The lock can be released to move the equipment for cleaning.



750 N. Blackhawk Blvd. Rockton, Illinois 61072
800-255-0626
Phone 815-624-8333 Fax 815-624-8000
www.taylor-company.com
info@taylor-company.com

ISO 9001:2015
Registered Firm





FIGURES IN BRACKETS INDICATE MILLIMETERS / DECIMAL AND FRACTIONAL DIMENSIONS EQUAL TO (+ PLUS OR MINUS 1/16 INCH (1.5mm)).

Weights	lbs.	kgs.
Net	519	235.4
Crated	593	268.9

*For reference only

	cu. ft.	cu. m
Volume	48.9	1.38

Dimensions	in.	mm.
Width	26-1/4	665
Depth	33-1/8	842
Height	59-7/8	1521
Floor Clearance	7-1/2	190

*Mounted on standard casters

Electrical	Maximum Fuse Size		Minimum Circuit Ampacity		Poles (P) Wires (W)
	Left	Right	Left	Right	
208-230/60/1 Air	20	15	14	11	2P 3W
208-230/60/1 Water	15	15	11	11	2P 3W
208-230/60/3 Air	15	15	10	7	3P 4W
208-230/60/3 Water	15	15	8	7	3P 4W
220-240/50/1 Air	15	12	14	10	2P 3W
380-415/50/3N~ Air	8	6	8	5	4P 5W

This unit may be manufactured with other electrical characteristics and may have additional regulatory agency approvals. Consult the local Taylor distributor for other electrical characteristics and agency approvals based on specific electrical and country requirements.

(For exact electrical information, approval marks, and refrigerant, always refer to the data label of the unit.)

Continuing research results in steady improvements; therefore, these specifications are subject to change without notice.

Bidding Specs

Electrical: Volt _____ Hz _____ ph _____
 Neutral: Yes No Cooling: Air Water NA

Options:

All options may not be available in combination with others or with all electrical or cooling configurations. Please consult your local Taylor distributor.

Authorized Taylor Distributor

Specifications

Electrical

Two dedicated electrical connections are required. See the electrical chart for the proper electrical requirements. Manufactured to be permanently connected. Consult your local Taylor distributor for cord and receptacle specifications as local codes allow.

Beater Motor

Two, 1/4 hp.

Refrigeration System

Two, 7,500 BTU/hr. R449A.
 (BTUs may vary depending on compressor used.)

Air-Cooled

Minimum 3" (76 mm) around all sides. Install the deflector provided to prevent recirculation of warm air. Minimum air clearances must be met to ensure adequate airflow for optimum performance.

Water-Cooled

Water inlet and drain connections underside of base 1/2" FPT.

Options

- Available as Model 342D, with Refrigerated Hopper, 1/2 hp Beater Motor, Beater Cycle Timer. Maintains mix below 41°F (5°C). Approved for dairy and non-dairy products.
- Remote Auto Fill System
- Syrup Jars and Brackets



750 N. Blackhawk Blvd.
 Rockton, Illinois 61072
www.taylor-company.com