



Item No. _____

PH90

Combination Freezer

Four Flavor Shake, Single Flavor Soft Serve, Pump

Features

Frozen dessert center to offer all the popular soft serve variations, from low or non-fat ice creams to custards, yogurt and sorbet, along with four separate shake flavors. Built in syrup rail for storing sundae toppings.

Heat Treatment System

Provides a daily heating and cooling cycle to safely maintain dairy products up to two weeks before a complete disassembly and cleaning is required.

Freezing Cylinder

Shake side, 7 quart (6.6 liter).
Soft Serve side, 3.4 quart (3.2 liter).

Portion Control

Portion controlled shake dispensing for high volume milkshake production.

Mix Hopper

Two, 20 quart (18.9 liter). Refrigerated to maintain mix below 41°F (5°C). Air/mix pumps deliver the precise amount of air and mix to the freezing cylinder.

Indicator Lights

Mix Low light alerts the operator to add mix. When the Mix Out light flashes, the unit automatically goes into Standby mode to prevent damage.

Electronic Controls

Viscosity is continually measured to serve consistent quality shake and soft serve. The LCD (Liquid Crystal Display) readout will identify temperatures in the hoppers or freezing cylinders at any point of operation. History of temperatures and times during the last 13 heat cycles may be viewed.

Standby

During long no-use periods, the standby feature maintains safe product temperatures in the mix hopper and freezing cylinder.

Shake Syrup System

Shake flavors are selected from touch pads. Self-contained air compressor delivers shake syrup from four, 1 gallon (3.8 liter) syrup tanks located in the lower front compartment. Frozen shake mix and syrup automatically blends to dispense the chosen flavor. Use only single strength syrup, free from pulp and seeds.

Syrup Rail

Four compartment syrup rail for sundae toppings; two heated with syrup pumps and two room temperature with lids and ladles.



Standard 6



SA2650



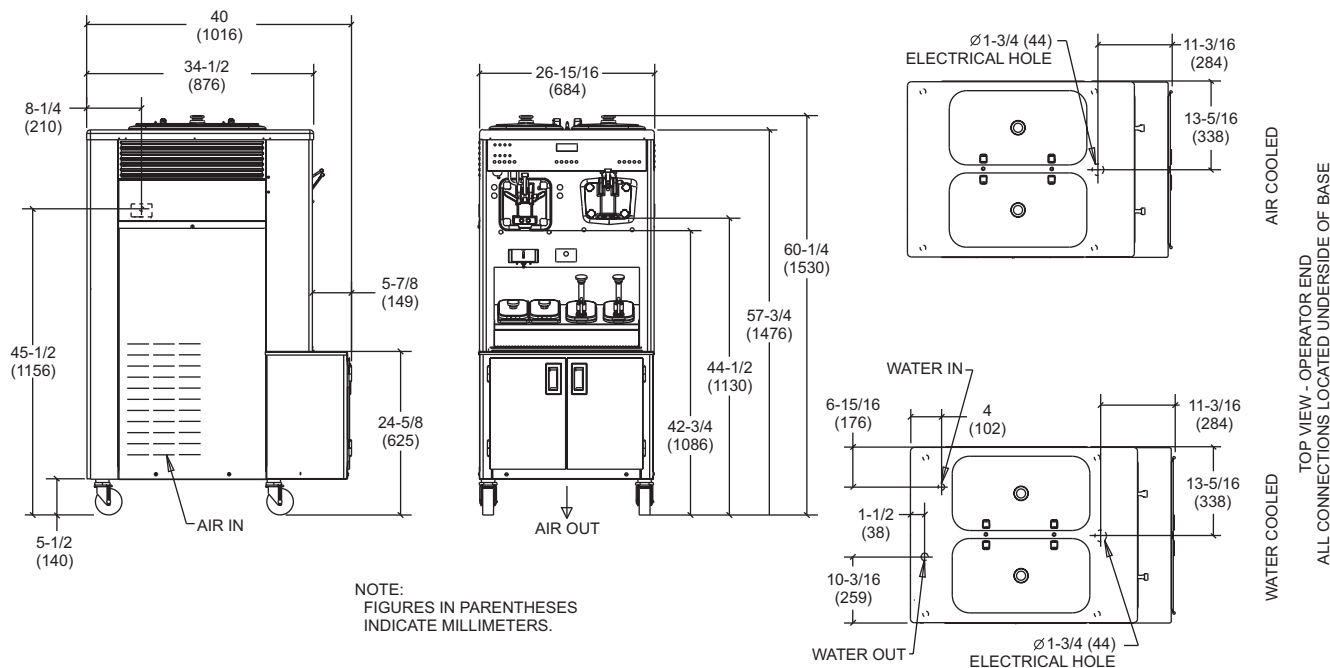
Selected 50 Hz. Models

Rockton, Illinois 61072
800-255-0626
Phone 815-624-8333 Fax 815-624-8000
www.taylor-company.com
e-mail: info@taylor-company.com

International Office
Taylor Company S.r.l.
Roma, Italy
Tel: **+39-06-420-12002** Fax: +39-06-420-12034
e-mail: romeoff@taylor-company.com



PH90 Combination Freezer



Weights	lbs.	kgs.
Net	915	415.1
Crated	1008	457.2
Volume	cu. ft.	cu. m.
Volume	66.5	1.88

Dimensions	in.	mm.
Width	26-5/8	676
Depth	40	1016
Height	60	1524
Floor Clearance	5-1/2	140

*Mounted on standard casters

Electrical	Maximum Fuse Size	Minimum Circuit Ampacity	Poles (P) Wires (W)
208-230/60/3 Air	45	38	3P 4W
208-230/60/3 Water	45	35	3P 4W
220-240/50/3 Air	45	34	3P 4W
220-240/380-415/50/3 Air	35	30	4P 5W
220-240/380-415/50/3 Water	35	30	4P 5W

This unit may be manufactured in other electrical characteristics. Refer to the local Taylor Distributor for availability.
(For exact electrical information, always refer to the data label of the unit.)

Bidding Specs

Electrical: Volt _____ Hz _____ ph _____
Neutral: Yes No | Cooling: Air Water NA

Options: _____

Specifications

Electrical

One dedicated electrical connection is required. See the Electrical chart for the proper electrical requirements. Manufactured to be permanently connected. Consult your local Taylor distributor for cord & receptacle specifications as local codes allow.

Beater Motor

Shake, 1.0 HP
Soft Serve, 1.5 HP

Refrigeration System

Shake, 11,000 BTU/hr. R404A.
Soft Serve, 9,500 BTU/hr. R404A
(BTU's may vary depending on compressor used.)

Air Cooled

Minimum 3" (76 mm) around all sides. Install the deflector provided to prevent recirculation of warm air. Minimum air clearances must be met to assure adequate air flow for optimum performance.

Water Cooled

Water inlet and drain connections under side of base 1/2" FPT.

Options

- Cone Dispenser

Continuing research results in steady improvements; therefore, these specifications are subject to change without notice.



Taylor Company,
a division of Carrier Commercial Refrigeration, Inc.
Rockton, Illinois 61072
815-624-8333 800-255-0626 Fax 815-624-8000
www.taylor-company.com

Printed in U.S.A.

046340-ADV 11/02