



TAYLOR® COMPANY

a Specialty Equipment company

Item No. _____

8751

Soft Serve Freezer

Single Flavor, Pump



Features

Offer all the popular soft serve variations from low or non-fat ice creams to custards, yogurt and sorbet.

Freezing Cylinder

One, 3.4 quart (3.2 liter).

Mix Hopper

One, 20 quart (18.9 liter). In-hopper air/mix pump delivers the precise amount of mix and air to the freezing cylinder for consistent overrun. Separate hopper refrigeration (SHR) maintains mix below 41°F (5°C) during Auto and Standby modes.

Indicator Lights

Mix Low light alerts operator to add mix.

Electronic Controls

Softech™ is our exclusive microprocessor based master control that regulates refrigeration by measuring product viscosity to maintain consistent quality.

Standby

During long no-use periods, the standby feature maintains safe product temperatures in the mix hopper and freezing cylinder.



In-Hopper Air/Mix Pump



Standard 6



SA2650



Selected 50
Hz. Models

Taylor Company has actively pursued all issues relating to the Year 2000 to assure compliance. This includes all internal business systems, the entire equipment line manufactured by Taylor, and readiness of our suppliers.

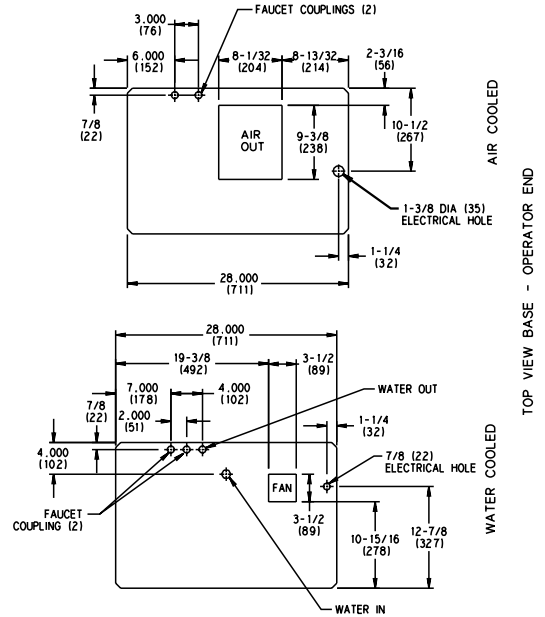
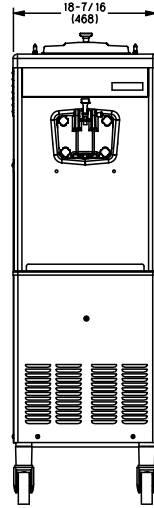
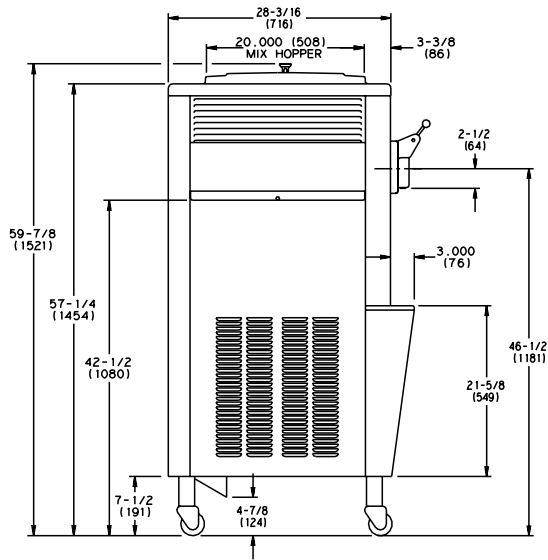
Rockton, Illinois 61072
800-255-0626
Phone 815-624-8333 Fax 815-624-8000
www.taylor-company.com
e-mail: info@taylor-company.com

International Office
Taylor Company S.r.l.
Roma, Italy
Tel: +39-06-420-12002 Fax: +39-06-420-12034
e-mail: romeoff@taylor-company.com



Taylor Company

8751 Soft Serve Freezer



(FIGURES IN PARENTHESES INDICATE MILLIMETERS)

Weights	lbs.	kgs.
Net	480	217.7
Crated	501	227.2
	cu. ft.	cu. m.
Volume	35.4	0.99

Dimensions	in.	mm.
Width	18-7/16	468
Depth	31-3/16	792
Height	59-7/8	1521
Floor Clearance	7-1/2	191

*Mounted on standard casters

Electrical	Maximum Fuse Size	Minimum Circuit Ampacity	Poles (P) Wires (W)
208-230/60/1 Air	35	27	2P 3W
208-230/60/1 Water	30	24	2P 3W
208-230/60/3 Air	20	18	3P 4W
208-230/60/3 Water	20	16	3P 4W
220-240/50/1 Air	25	22	2P 3W
220-240/380-415/50/3 Air	15	13	4P 5W

This unit may be manufactured in other electrical characteristics. Refer to the local Taylor Distributor or availability. (For exact electrical information, always refer to the data label of the unit.)

Bidding Specs

Electrical: Volt _____ Hz _____ ph _____
 Neutral: Yes No **Cooling:** Air Water AW

Options: _____

Specifications

Electrical

One dedicated electrical connection is required. See the Electrical chart for the proper electrical requirements. Manufactured to be permanently connected. Consult your local Taylor distributor for cord & receptacle specifications as local codes allow.

Beater Motor

One, 1.5 HP.

Refrigeration System

One, 9,500 BTU/hr. R404A.
 Separate Hopper Refrigeration (SHR), One, 400 BTU/hr. R134a. (BTUs may vary depending on compressor used.)

Air Cooled

Minimum 3" (7.6 cm) around all sides. Install the deflector provided to prevent recirculation of warm air. Minimum air clearances must be met to assure adequate air flow for optimum performance.

Water Cooled

Water inlet and drain connections under side of base 3/8" FPT.

Options

- Cone Dispenser
- Draw Valve Lock Kit
- Faucet
- Hopper Locks
- Panel Spinner
- Sneeze Guard
- Syrup Rail Kit (side mount)

Continuing research results in steady improvements; therefore, these specifications are subject to change without notice.



TAYLOR COMPANY
 a Specialty Equipment company

Taylor Company Rockton, Illinois 61072
 815-624-8333 800-255-0626 Fax 815-624-8000
 www.taylor-company.com

Printed in U.S.A.